



SAR UCLA Health 2023



UCLA Sustainability Action Research

We Are...



Sophia Merish-Rose, Hannah Freedman, Salman Jaber, Olive Fengel, Amanda Pineda, Lilit Shahbazian



Stakeholder: Noah Bidna
UCLA Health Sustainability Analyst

Project Context

UCLA Health must be compliant with UC sustainability policies

However, policy implementation is often slow/incomplete

UCLA Health is certified by Practice Greenhealth, but individual departments have little accountability for sustainable practices

Our Research Plan

Develop and pilot a department-level green checklist to ensure that clinics and offices are compliant with UC policy



Research Question

How aligned are UCLA Health departments with current sustainability policies, and how will a small-scope green certification process assist individual departments in complying with these policies?



Methodology



Winter Quarter

Informational Interviews

Informational interviews with UCSF and UCSD to help overcome initial confusion about kickstarting certification

Checklist

Created initial draft of our checklist that consists of five categories all inspired by existing policies

5 Categories:



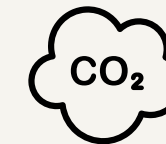
Waste reduction



Culture of Sustainability



Water Conservation



Carbon Neutrality



Sustainable Procurement

UNIVERSITY
OF
CALIFORNIA

Office
of the
President



PRACTICE
Greenhealth®



Spring Quarter

Walkthroughs

Conducted 4 in-person walkthroughs to ensure the accuracy of checklist responses

Feedback Surveys

Administered optional feedback surveys to identify areas of improvement for future implementation

Clinics

- Pediatric Intensive Care Unit (PICU)

Offices

- Environmental Services (EVS)
- Office of Operations & General Services (OO & GS)
- Environmental Health & Safety + Emergency Preparedness (EHS + EP)



Infographic Presentation

Sustainability Evaluation

UCLA Health EHS & EP

1 TIP #1: Place compost bins in the kitchen and the bathrooms.

2 TIP #2: Post "One Towel is Enough" signs and water conservation stickers in the bathrooms

3 TIP #3: Encourage reusable water bottles/cups instead of plastic water bottles for staff. Save the plastic water bottles as a last resort situation.

4 TIP #4: Transition from halogen lights to LED lights. Submit a SSR form for Facilities to request LED light fixtures.

5 Great job recycling in the office! If you want, you can combine glass and paper recycling (it is not necessary to separate them since we just have one recycling stream).

Results



Informational Interviews

UCSF

- Pre-assessment spreadsheet
- Completed by a sustainability champion
- Weighted checklist items
- Follow-up with a walkthrough + recommendations

UC San Diego Health

- Initial 40 Q survey
- Completed by at least 50% of staff
- Unweighted checklist items
- Follow-up with a walkthrough + presentation



Checklist Development

Certification Question	Check: Y/N	Question Weight	Actions	Policy	Link to Policy
Waste Reduction					
Bin Standardization					
The office has well-labeled and easily accessible recycling bins & appropriate signage.		1	Recycling bins & signage may be ordered by Unit Buyer	Policy 22 (waste) The University will achieve zero waste through prioritizing waste reduction in the following order: reduce, reuse, and then recycle and compost (or other forms of organic recycling)	https://policy.ucop.edu/doc/3100155/SustainablePracti
The office has well-labeled and easily accessible compost receptacles & appropriate signage in break rooms		2	Compost bins, centralized waste bins & signage can be ordered by Unit Buyer	Policy 79 (waste) The University will achieve zero waste through prioritizing waste reduction in the following order: reduce, reuse, and then recycle and compost (or other forms of organic recycling)	https://policy.ucop.edu/doc/3100155/SustainablePracti
The office bathrooms all have compost bins for paper towels & the "One Towel is Enough" Signage		1	Contact UCLA Health Sustainability at ucasustainability@mednet.ucla.edu for bathroom paper towel compost bins and signage	The University will achieve zero waste through prioritizing waste reduction in the following order: reduce, reuse, and then recycle and compost (or other forms of organic recycling)	https://policy.ucop.edu/doc/3100155/SustainablePracti
The office has well labeled confidential paper recycling bins (as Applicable)		1	RRUMC contact Leah Bozulich-Coker at LBozulich@mednet.ucla.edu SMMC contact Jessica Martinez at JesMartinez@mednet.ucla.edu	The University will achieve zero waste through prioritizing waste reduction in the following order: reduce, reuse, and then recycle and compost (or other forms of organic recycling)	https://policy.ucop.edu/doc/3100155/SustainablePracti
Office Spaces					
The office has eliminated the use of personal printers		2	Submit an IT Support Ticket: https://it.uclahealth.org/support to request the removal of personal printers	IT Hardware includes all electronic product categories covered and defined by the current EPEAT® ecolabel, including computers (desktop computers, notebook computers, integrated desktop computers, portable all-in-one computers, slates/tablets, small-scale servers, thin clients, and workstations), displays (monitors and signage displays), servers, imaging equipment (copiers, digital duplicators, facsimile machines, multifunction devices, printers, mailing machines, and scanners), televisions, mobile phones, and photovoltaic modules and inverters.	https://www.ucop.edu/procurement-services/for-ucstaff/procurement/sustainableprocurementguidelines.pdf
The office has multifunction printers that scan, fax, print, and copy.		2	Submit an IT Support Ticket: https://it.uclahealth.org/support to set up your multifunction printers	IT Hardware includes all electronic product categories covered and defined by the current EPEAT® ecolabel, including computers (desktop computers, notebook computers, integrated desktop computers, portable all-in-one computers, slates/tablets, small-scale servers, thin clients, and workstations), displays (monitors and signage displays), servers, imaging equipment (copiers, digital duplicators, facsimile machines, multifunction devices, printers, mailing machines, and scanners), televisions, mobile phones, and photovoltaic modules and inverters.	https://www.ucop.edu/procurement-services/for-ucstaff/procurement/sustainableprocurementguidelines.pdf
The office has set double-sided printing as the default for each public printer.		2	Submit an IT Support Ticket: https://it.uclahealth.org/support to set up double-sided printing for your public printer	The Comprehensive Procurement Guidelines (CPG) require federal agencies to purchase at least paper with at least 30% post-consumer recycled content. Other applicable standards include: Ecologo/UL 2771 Standard for Sustainable Paper Products Green Seal 07 Standard for Printing and Writing Paper FSC Recycled	https://www.epa.gov/smm/comprehensive-procurement-paper-products#01



- Two checklists produced: Clinic and Office
- First drafts approved by UCLA Health Sustainability Programs Manager, Sarah Brockhaus
- Edits made from department feedback after pilot run

Pilot Data



	Walkthrough Accuracy	Score	Certification
PICU	93%	29%	N/A
EHS + EP	100%	37%	N/A
OO + GS	90%	92%	Gold
ES	97%	68%	Bronze

Feedback Survey

Feedback from: EHS & EP, PICU

Positives: 

- Checklist is comprehensive
- Certification is useful for assessing sustainability progress
- Departments now able to identify specific actions to take

Areas to Improve: 

- Some checklist items felt out of the departments' control
- Allow certification points to be marked "N/A"
- Provide signage or tips sheet during walkthroughs



Significance and Conclusion



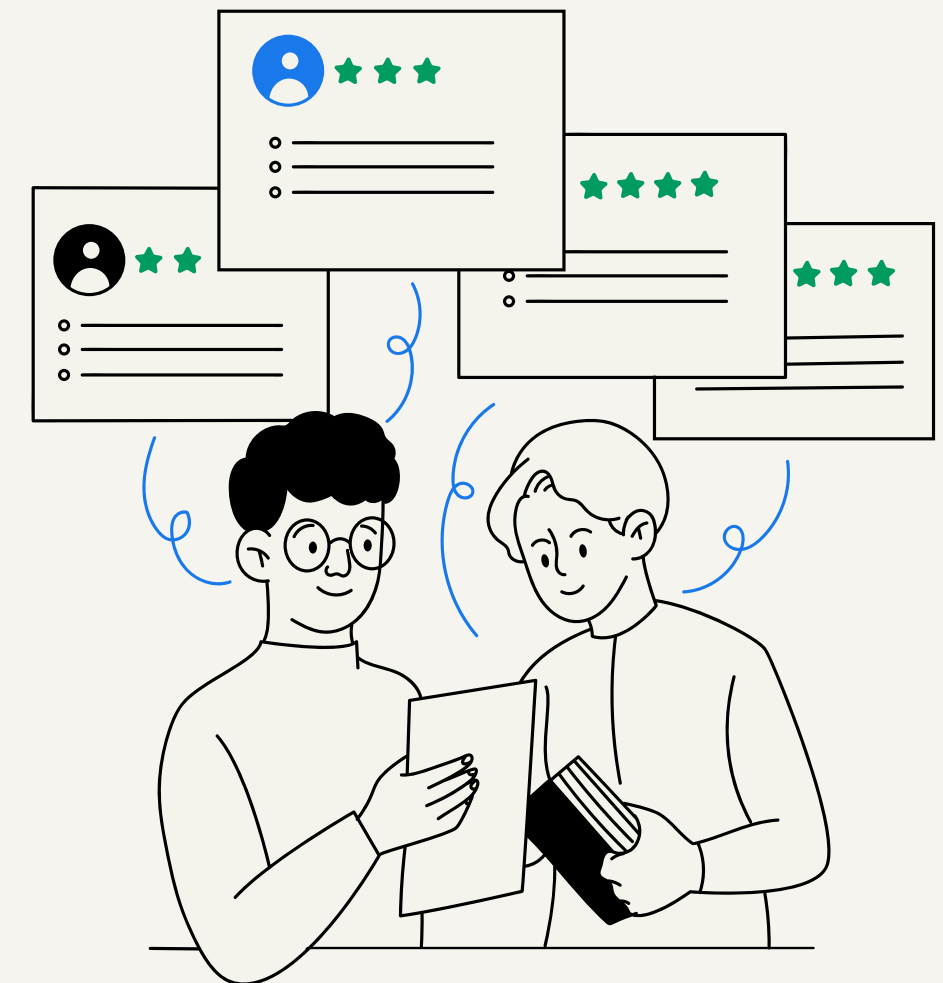
Our Process Critique

Walkthroughs proved extremely useful:

- System-wide barriers within UCLA Health illuminated
 - i.e. formulary printer paper is not recycled
- Lots of department-specific situations to sort out
 - i.e. multiple waste streams in OO

Some checklist questions proved out of department control and require system adjustment:

- Example: non-LED lights in a leased building



Future Recommendations

- 1) Change point-system from a binary yes/no answer to a 1-4 scale
- 2) Continuation of walkthroughs (with secondary zoom option)
- 3) Incorporate in-person presentations in addition to infographic



Thank you

Questions?

