

34°04'25.4"N

118°27'17.8"W:



SAGE HILL

TONGVA
LAND

three perspectives, one place

MY FIRST EXPERIENCE
OF THE LAND WAS
MY FIRST YEAR AT UCLA

MY FRIEND TOLD ME
ABOUT A SECRET SPOT
WHERE PEOPLE WOULD
HANG OUT

SOMEWHERE ON THE
WEST PART OF THE HILL
REMNANT CHURCHES

SHE CALLED IT BANANA

ONE DAY I VENTURED
OUT CLIMBED A FENCE
AND FOUND IT

AN IDYLIC HILLSIDE
SEEMINGLY UNTOUCHED
BY UCLA

IT WAS QUIET

UPON EXPLORING FURTHER
I FOUND A SIGN SAYING
THAT THIS WAS SAGE HILL

I THOUGHT OH OK I GUESS
UCLA DOES KNOW ABOUT
THIS PLACE

I THOUGHT HOPEFULLY
THEY DONT END UP
BUILDING ANYTHING ON
TOP OF HERE

OVER THE COURSE
ABOUT THE AS YOU
CAME TO BANANA WITH
FRIENDS TO HANG OUT
SOME OF JUST VIBE
I STARTED TO NOTICE
HOW DIFFERENT PEOPLE
USED THE LAND

IT SEEMED LIKE UCLA
VIEWED THE LAND AS A
KIND OF CONSERVATION
SPACE WHERE THEY
COULD STUDY THE NATIVE
ENVIRONMENT

OTHER STUDENTS USED
THE SPACE AS A PLACE
TO GO AS A PLACE TO
HANG OUT AND ESCAPE
FROM THE INTENSITY OF
SCHOOL

IN MY SECOND YEAR I
BEGAN TO HAVE CLASSES
IN PERSON AND I BEGAN
TO NOTICE THE LAND
ACKNOWLEDGMENTS
THAT ALL CLASSES HAD
IN THEIR SYLLABI AND
MENTIONED ON THE FIRST
DAY

THIS IS UNCEDED TONGVA

LAND THEY SAID

TONGVA LAND

UNCEDDED

AND YET STILL UNDER
THE CONTROL OF UCLA
A LAND GRANT
INSTITUTION AND DIRECT
DESCENDANT OF THE
COLONIZATION THAT
STOLE THE LAND IN THE
FIRST PLACE

I LEARNED MORE
ABOUT THE HISTORY OF
COLONIAL PRESENCE IN
LOS ANGELES AND HOW
IN SO MANY SOURCES
ITS PRESENTED AS A
PEACEFUL THING

WHEN REALLY THE
NATIVE TONGVA COMM-
UNITY WAS FORCED
TO WORK ON RANCHOS
DOING JOBS THAT
WERE DESTROYING THE
HABITAT THAT THEY HAD
INHABITED FOR AGES

I LEARNED MORE ABOUT
THE LAND THAT UCLA
CALLS SAGE HILL

AND THE GOALS THAT
THEY HAVE FOR IT

THERES A DESIRE TO

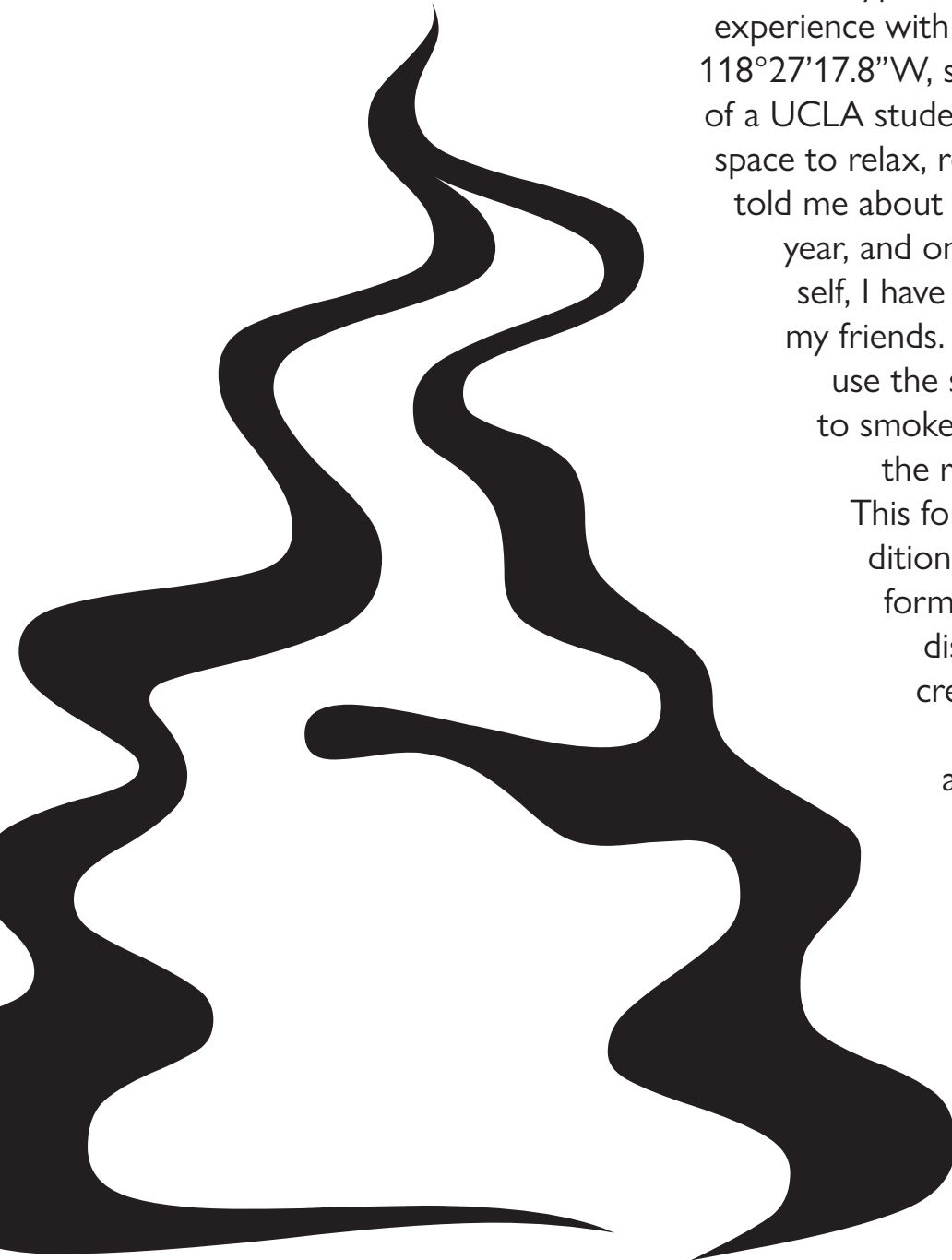
WHY SHOULD WE AS
MEMBERS OF THE
COLONIZER COMMUNITY
OF UCLA GET TO
CONTROL THIS SCRAP
OF STILL NATIVE
LAND AND ASK THE
TONGVA COMMUNITY TO
TEACH US ABOUT ITS
SIGNIFICANCE

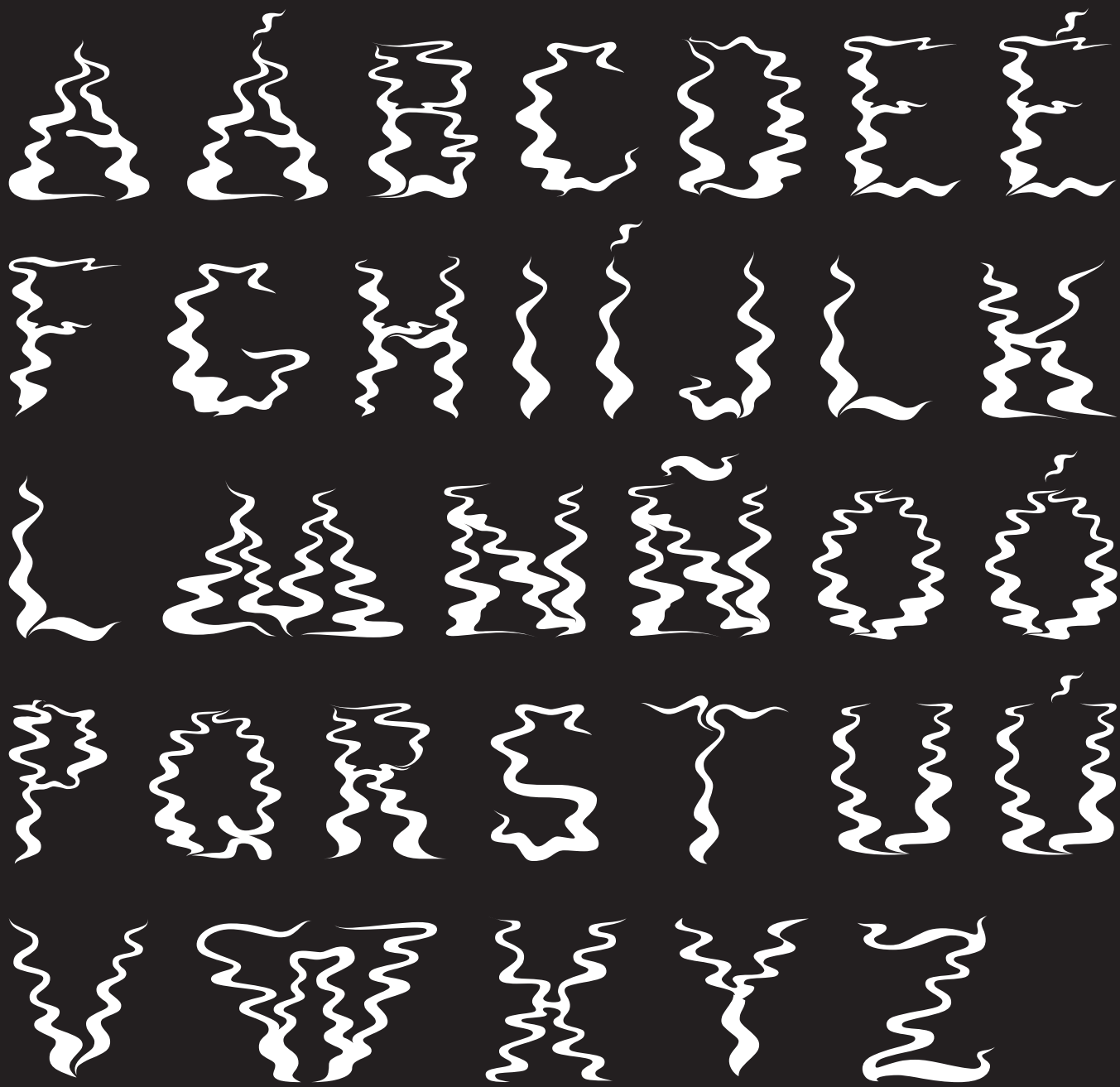
AS A PERSON WHO
RESIDES NEAR THE LAND
HOPE TO BE ABLE TO
CONTINUE USE IT AS
A PLACE TO RETREAT
FROM THE CHAOS OF
STUDENT LIFE

BUT IT DOESNT FEEL
LIKE A RETREAT WHEN
I THINK ABOUT HOW
UCLA IS USING THE LAND
AS A TOKEN OF THEIR
WOKENESS WHEN IN
REALITY THEY WOULD
NEVER WANT TO TAKE
REAL ACTION AND GIVE IT
BACK

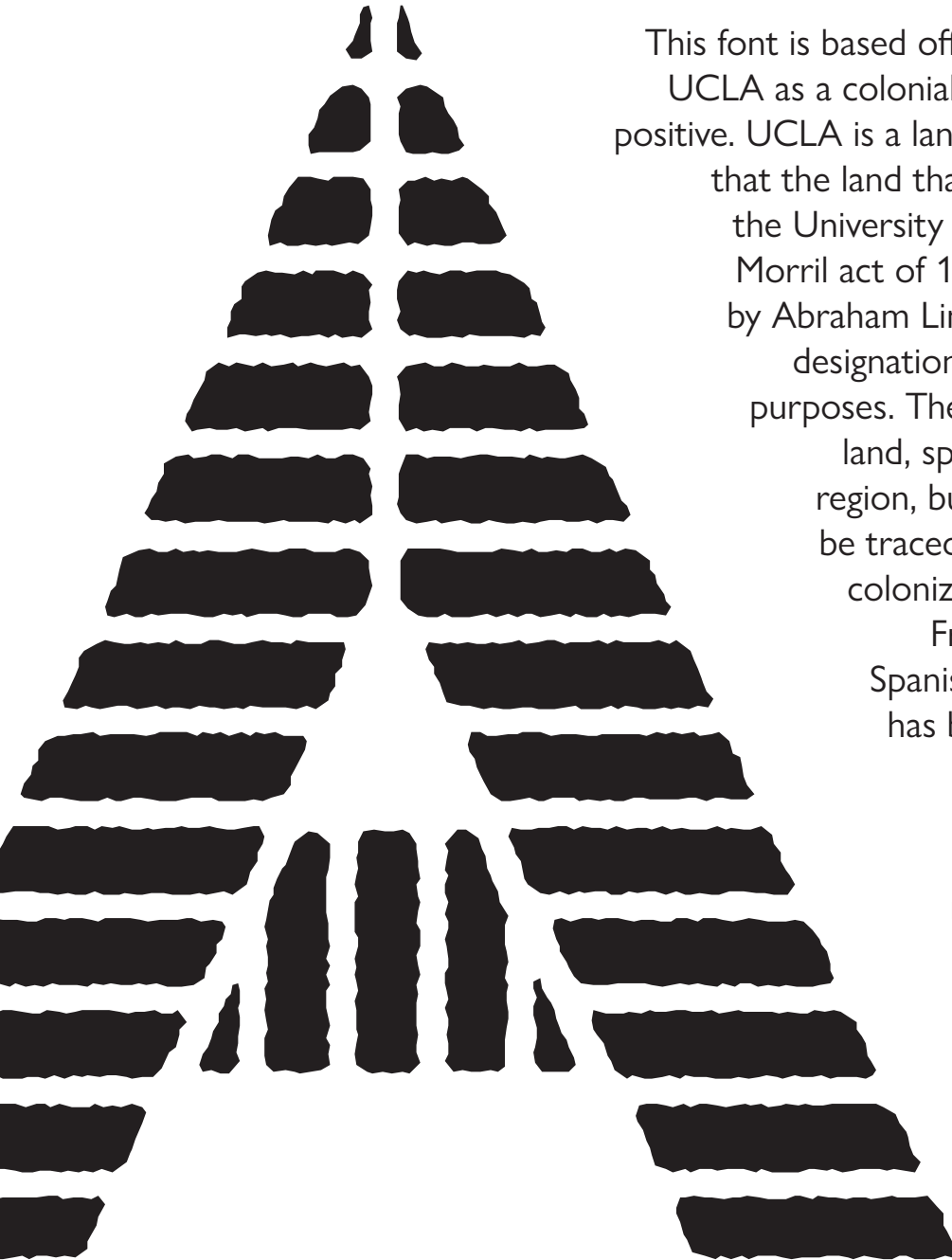


The Narnia typeface is based off of my initial experience with the land at 34°04'25.4"N 118°27'17.8"W, seen from the perspective of a UCLA student who uses the land as a space to relax, retreat and vibe. My friend told me about the space in my freshman year, and once I discovered it for myself, I have used it and shared it with my friends. Many other students also use the space. Many people come to smoke and relax, get away from the regular intensity of UCLA. This font is based off of that tradition, and is modeled after the forms that smoke creates as it dissipates through the air. It creates shapes that are free, fluid, and relaxed. Its not always easy to understand but its always a vibe. I hope that I have been able to capture this aesthetic in my font.





SAGE HILL



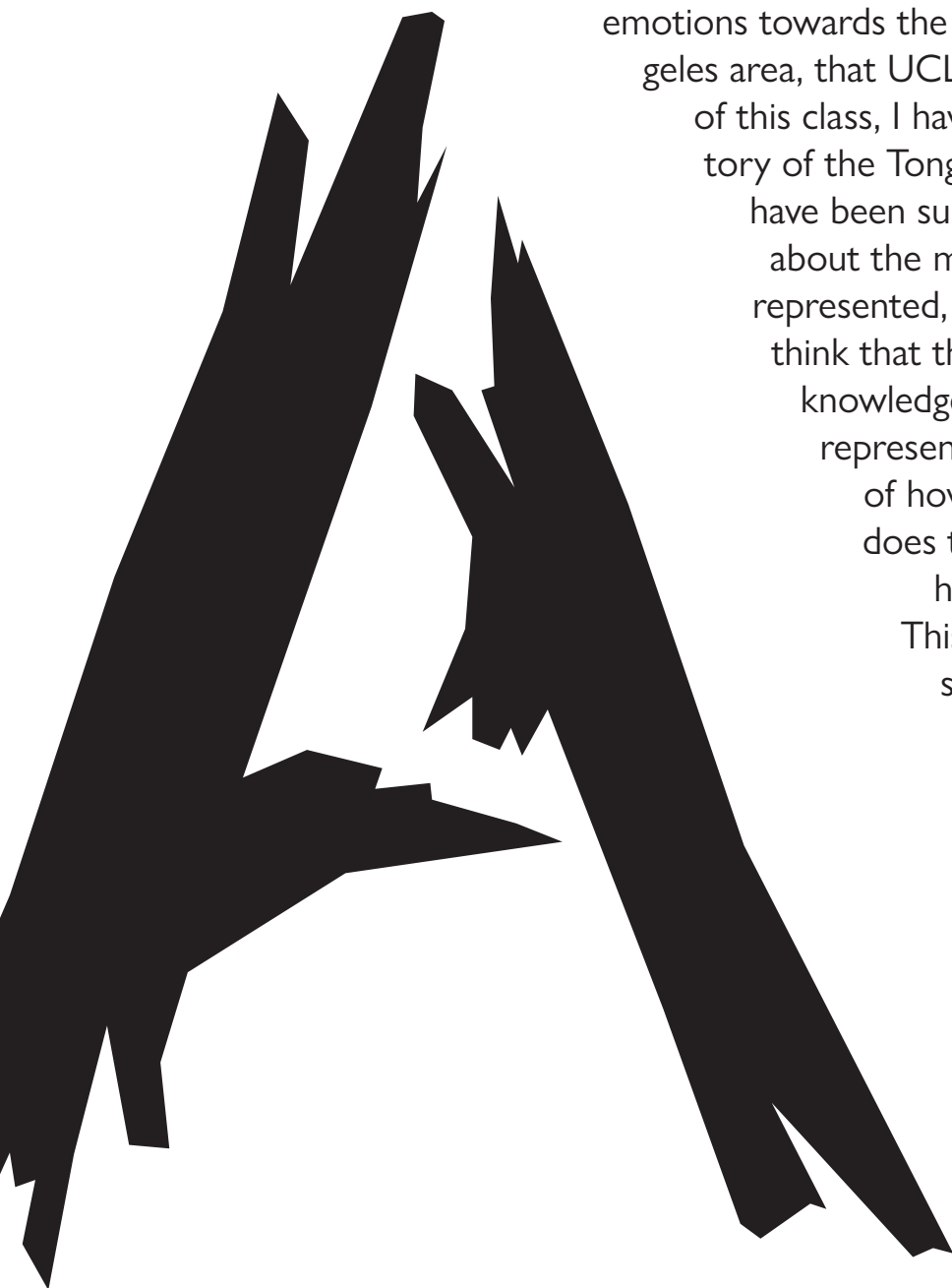
This font is based off of my orientation towards UCLA as a colonial institution, which is not so positive. UCLA is a land grant institution, meaning that the land that it resides on was given to the University of California as part of the Morrill act of 1862. This was an act signed by Abraham Lincoln, which has to do with designation of US land for educational purposes. The American ownership over land, specifically in the Los Angeles region, but also everywhere else can be traced back through the layers of colonization that have taken place.

From the USA to Mexico, to Spanish conquistadores, this land has been under colonial control for the past four hundred years. This font highlights UCLA's part in that, referencing the font used in the UCLA logo, combined with the european aesthetic that UCLA portrays itself with in its architecture and identity aesthetics.

A Ȧ B C D E Ė
F G H I J K L
M N Ṅ O Ȯ P
Q R S T U U̇ V
W X Y Z

TONIGVA LAND

The Tongva Land typeface is a representation of my emotions towards the colonial legacy in the Los Angeles area, that UCLA is part of. Over the course of this class, I have learned a lot about the history of the Tongva community and what they have been subjected to. I have also learned about the myriad ways that this history is represented, or misrepresented. I honestly think that the current practice of land acknowledgements is somewhat of a misrepresentation of this history in terms of how passive it is and how little it does to teach people about the true history or current movements. This font is based off of the hand scrawled aesthetic of the Land Back movement's logo, combined with the forms that oak branches make. It is a fusion of the anger of activism and the aesthetic of nature. I think that out of the three perspectives, this one would be the one that the plants agree with most.



D

A Á B C D E É
F G H I Í J L K
L M N Ñ O Ó
P Q R S T U Ú
V W X Y Z

ARTIST STATEMENT

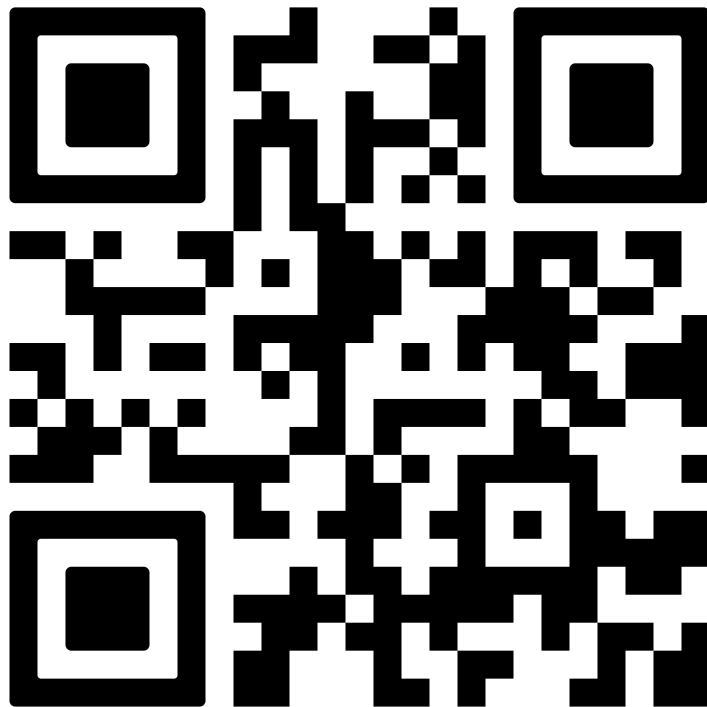


I had the idea for this project last summer, when I was thinking about what I wanted to make for this class. I was thinking about the land that we would be studying and I realized that I could identify a multitude of different perspectives on the land, from my own perspective as a student, to UC-LA's perspective as an institution, to the plants and animals perspective as inhabitants, to the native tongva community's perspective as original stewards. These perspectives differ intensely from each other and I was super interested in examining the differences between these perspectives and the ways that they overlap and influence each other. I initially wanted to make zines to showcase each of these perspectives, but eventually I became more interested in the voices that I heard in my understandings of each orientation. I decided to make fonts in order to have a medium to express my own thoughts on each side of the land, and to discuss the way that my perspective has changed over the years that I have known about the land.

Thanks for taking a look!

Tacy Prins Woodlief

You can download the current versions of the fonts from this page:



Tacy Prins Woodlief 2022