



Visual Resource: Watershed Topography

Figures 1, 2 and 2A



Figure 1. The topographic map on the left uses contour lines to create a two-dimensional representation of the landform on the right.

Source: <http://mac.usgs.gov/mac/isb/pubs/booklets/symbols/reading.html>

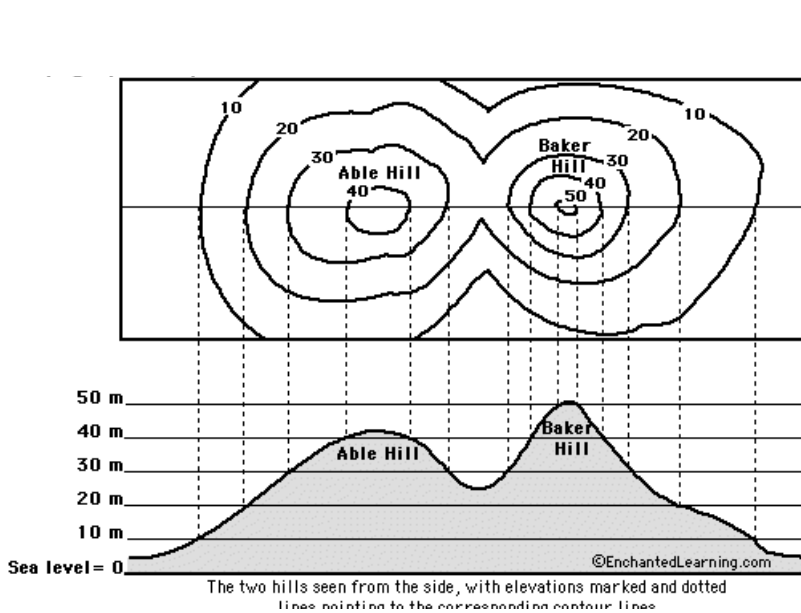


Figure 2. Simple topographic map of two hills and a corresponding side profile of the depicted two hills. The side profile has elevations marked and has dotted lines pointing to some of the corresponding contour lines.

Source: <http://www.enchantedlearning.com/geography/mapreading/topo/>

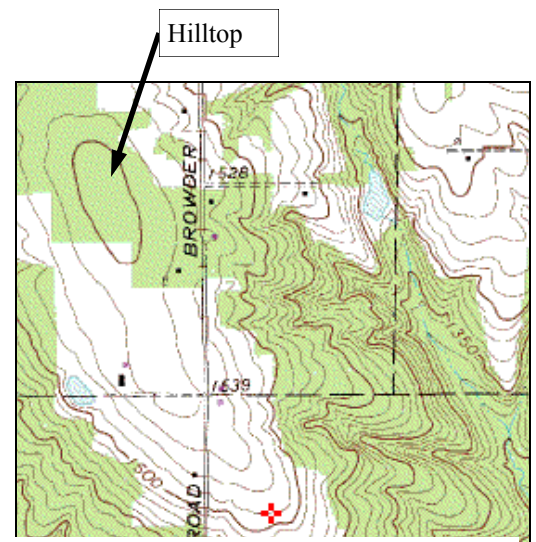


Figure 2A. You will notice that there are small ravines (V-shaped) being cut back up into the hillside. This illustration also shows the U-shaped ridge-top pattern.

Source: <http://www.topozone.com>





Visual Resource: **Watershed Topography**

Figure 2.C

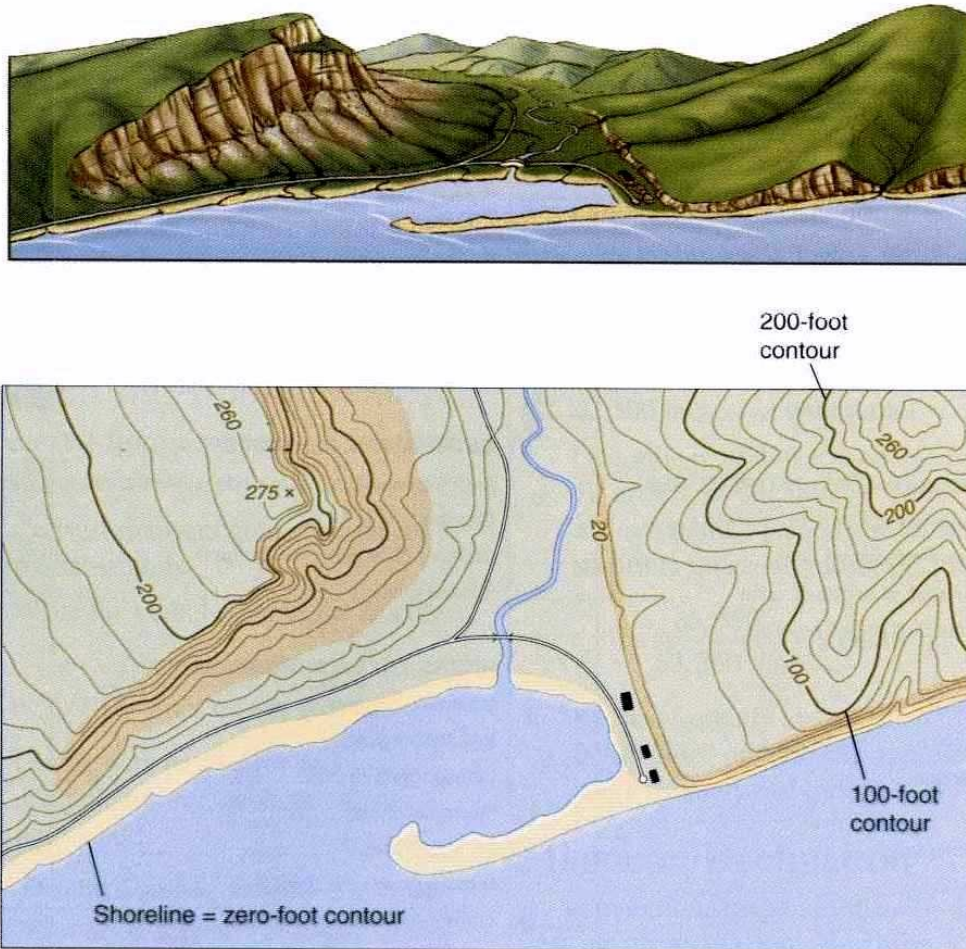


FIGURE 6.7

The area sketched in the top diagram is shown as a topographic map in the bottom diagram. Contour lines on the bottom diagram are drawn at intervals of 20 feet, starting with 0 at mean sea level. SOURCE: U.S. GEOLOGICAL SURVEY.

Illustration Sources: LABORATORY MANUAL FOR PHYSICAL GEOLOGY by Norris W. Jones, 2001.





Visual Resource: Watershed Topography

Figure 2.D

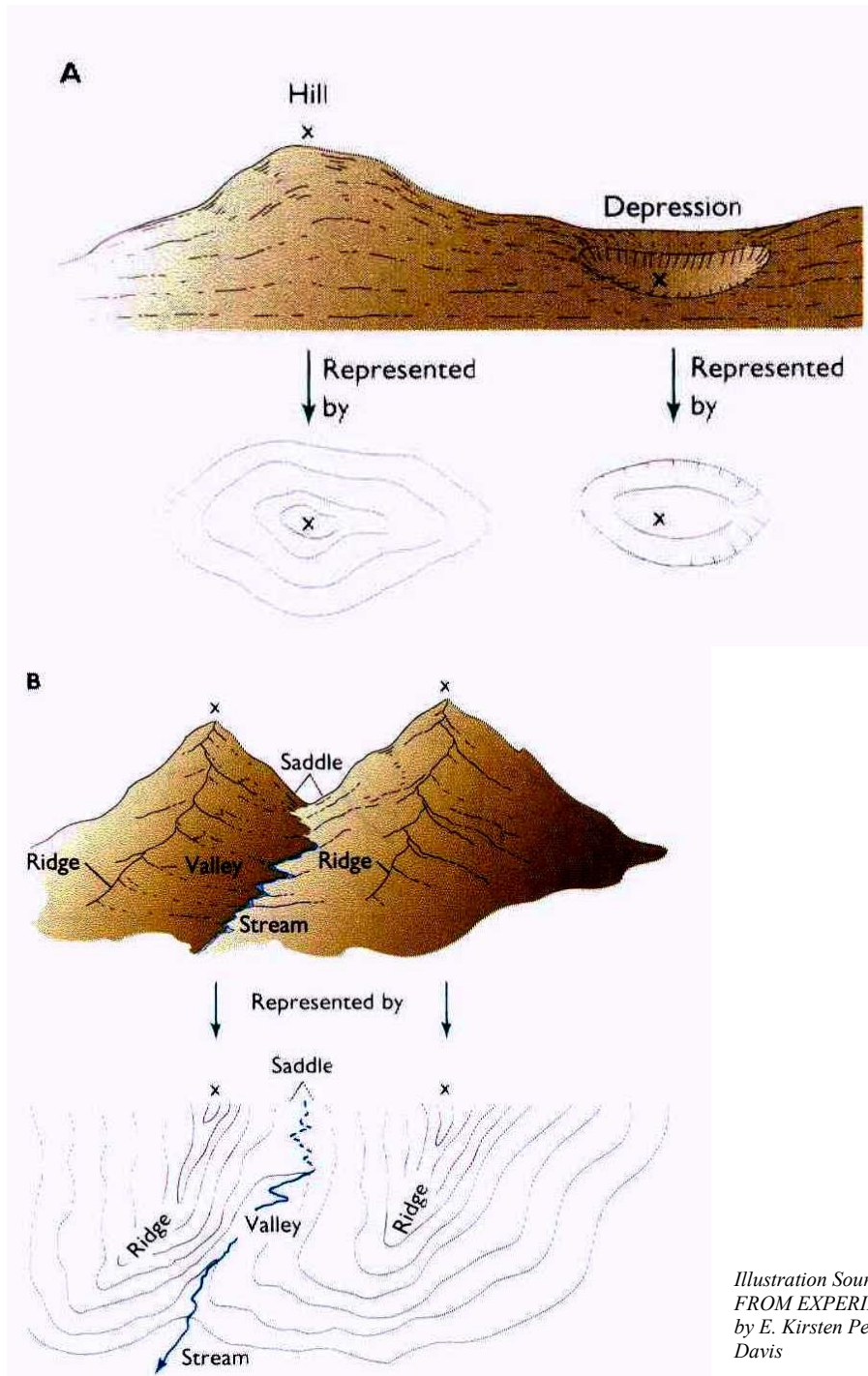


Fig. 2.D

